

# OLYMPUS

Your Vision, Our Future

Metal Halide Illumination System  
X-CITE® 120 and 120 PC

The New Standard in Fluorescence Illumination



**A** EXFO X-Cite 120  
with adjustable iris



**B** Metal halide burner  
for X-Cite 120 and 120 PC



**C** Light guide adapter  
for X-Cite 120 and 120 PC



## PRE-ALIGNED INTELLI-LAMP SYSTEM

**A** The X-Cite 120 and 120 PC give you convenience and control never before available in a fluorescence illuminator. They have been engineered specifically to let you focus your energy where it belongs – on the best possible results.

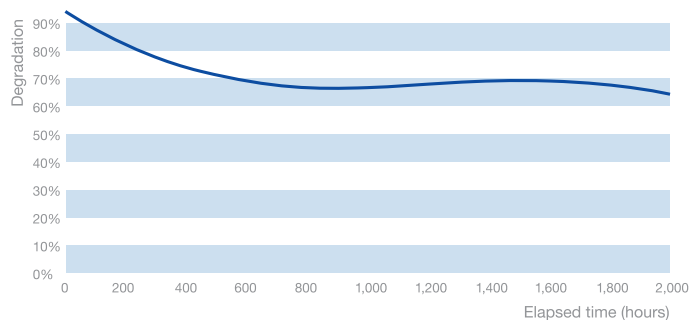
### Results without risks

**B C** No more difficult lamp changes – just snap out the old lamp and snap in a new one. The X-Cite 120 and 120 PC are even pre-aligned for further convenience. Rated at 2,000 hours, this powerful 120 W metal halide lamp has about seven times the life-span of a conventional mercury lamp. That means significantly fewer replacements and consistent savings in both time and money. Connecting the X-Cite 120 or 120 PC to all Olympus BX2, IX2, SZX2 and MVX10 microscopes is easy too – simply snap the relevant adapter into the existing light port and the system is ready to work.

### 2,000-hour lamp life

For quality and safety reasons, most conventional mercury illumination lamps have a maximum recommended life of around 300 hours. The metal halide lamp used in the X-Cite 120/120 PC extends this to 2,000 hours.

Typical lamp degradation for X-Cite 120 XL



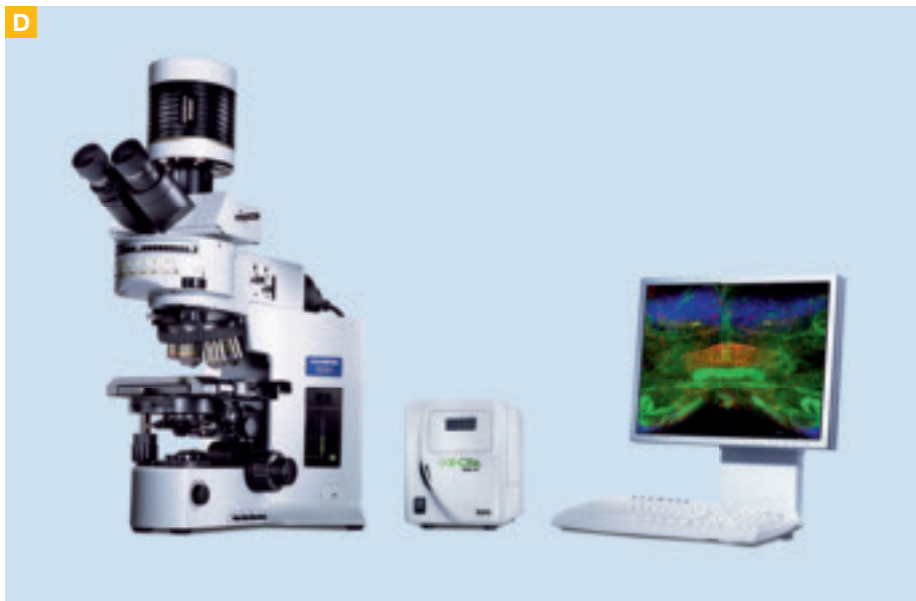
### Improved safety

The X-Cite 120 and 120 PC have been designed with safety in mind. Their enclosure and connections have been specially engineered to eliminate light leakage. The pre-aligned lamp prevents accidental UV or bright light exposure. Automatic safety interlock features activate during lamp or light guide removal, providing additional protection against accidental exposure. The system's environmentally friendly lamp employs a quick-strike arc that eliminates hazardous ozone production. In addition, lab equipment is also protected from power surges and RF interference. The X-Cite 120 and 120 PC also meet electromagnetic compatibility standards for conductive and radiated emissions.

### Better results

The Intelli-Lamp system's proprietary design continually monitors lamp temperature, preventing life-shortening restrikes until the lamp cools to a "safe-to-restart" state. The design also helps to ensure that the X-Cite 120 or 120 PC operates at a consistent intensity – both over time and from lamp to lamp – for reliable and repeatable results. Finally, with the excellent transmission properties of the liquid light guide, the 120 W metal halide lamp provides rich spectral excitation, with a totally uniform field of view, and ensures that no heat is transferred to the specimen.

D



### Full compatibility

**D** The X-Cite 120 or 120 PC can be easily connected to any microscope from the Olympus BX2, IX2, SZX2 ranges as well as the unique MVX10 Macroview microscope – simply snap the relevant adapter into the existing light port and the system is ready.

### Built-in intelligence

**E** The user-friendly controls of the X-Cite 120 and 120 PC make operation simple and straightforward. The LCD displays total accumulated lamp usage so it is very easy to track the life of the lamp. For more precise light source management, the X-Cite 120 PC can be fully controlled via each member of the proprietary Olympus cell\* imaging and analysis software family. When coupled with a motorised microscope, the X-Cite 120 PC and cell\* software provide researchers with an integrated system for the best fluorescence imaging solution.

### Adjustable iris

The adjustable iris (standard in X-Cite 120 PC, optional in X-Cite 120) enables the optimal light intensity to be set on the illuminator. This is beneficial in applications where photobleaching is a concern.

### Additional features of X-Cite 120 PC

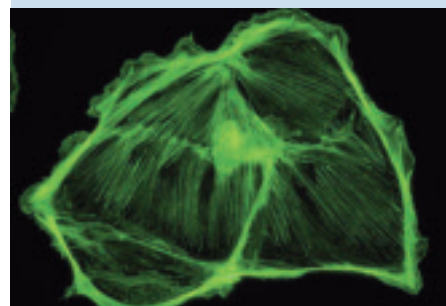
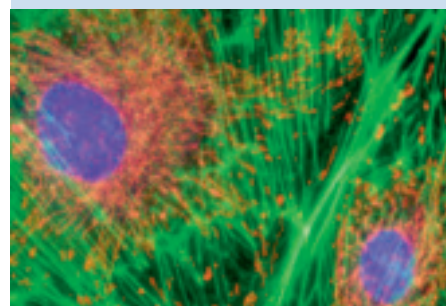
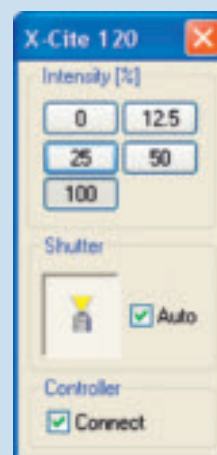
The X-Cite 120 PC includes a software interface for simple control of the illuminator. It can also be integrated into an automated system, via the RS232 connection. This allows the control of the lamp, shutter and iris from a PC.

### Built-in shutter and timer (only X-Cite 120 PC)

The X-Cite 120 PC includes a built-in shutter with a 200 ms response time. There is also a fully integrated timer to control exposure timing and reduce photobleaching from over exposure. Furthermore, the foot pedal control of the shutter provides hands-free operation, leaving the user's hands free for other important tasks such as focusing and sample navigation.

### E X-Cite interface

Simple control via cell\* software



## Specifications

Features	X-Cite 120	X-Cite 120 PC	Benefits
Pre-Aligned Lamp	+	+	No alignment required – faster and easier lamp change
2,000 Hours Lamp Life (typical)	+	+	Fewer lamp replacement save time and money
Intelli-Lamp Technology	+	+	Maintains optimum lamp temperature, automatically counts lamp hours
Powerful Proprietary 120 W Lamp*	+	+	Broad spectrum with high excitation intensity
Light Guide Attachment	+	+	Excellent uniformity, no heat is transferred to the specimen
BX/IX/MVX/SZX2 Coupling Optics	+	+	Uniform field of view with various aperture stops and magnifications
RS232 Communication	-	+	PC control of lamp, iris and shutter; integrated in automated system
Software Interface	-	+	Simple to use
Shutter and Timer	-	+	Control sample exposure time (200 ms response time)
Foot Pedal	-	+	Hands-free operation
Adjustable Iris	optional	+	Set light intensity to 100%, 50%, 25%, 12% or 0%
CE Marked	+	+	Ready for worldwide use

Specifications	X-Cite 120	X-Cite 120 PC	Description
Standard System Components	+	+	Lamp module, liquid light guide with adapter
"	+	+	Grounded and shielded power cord and manual
"	-	+	Software CD, 9-pin serial cable, quick-start guide
High-Efficiency Power Supply	+	+	Switch mode, line isolated, 90–264 VAC, 47–63 Hz, universal input
Warm-Up Period	90 sec.	90 sec.	(typical)
Weight	3.04 kg	3.18 kg	(= 6.7 lb./7 lb.)
Dimensions (l / w / h)	see right	see right	34.3 cm x 14 cm x 16.5 cm (= 13.5" x 5.5" x 6.5") both systems

Panel Controls and Displays	X-Cite 120	X-Cite 120 PC	Description
Power ON/OFF	+	+	Panel control
Mode Select	-	+	Panel control
Adjust UP/DOWN, START/STOP	-	+	Panel control
Lamp ON, Lamp Error	+	+	Display indicator
Accumulated Lamp Hours	+	+	Display indicator
Lamp Warm-Up, Lamp/Shutter Error	-	+	Display indicator
Shutter Open	-	+	Display indicator
Iris Setting	-	+	Display indicator (100%, 50%, 25%, 12%, 0%)
Exposure Time	-	+	Display indicator (0.2–999.9 sec.)

Hg LAMP CONTAINS MERCURY – handle in accordance with disposal laws. See: [www.lamprecycle.org](http://www.lamprecycle.org)

The manufacturer reserves the right to make technical changes without prior notice.

[www.olympus-europa.com](http://www.olympus-europa.com)

**OLYMPUS**

OLYMPUS LIFE SCIENCE EUROPA GMBH

Postfach 10 49 08, 20034 Hamburg, Germany  
Wendenstraße 14–18, 20097 Hamburg, Germany  
Phone: +49 (0) 40 23 77 30, Fax: +49 (0) 40 2 37 73 46 47  
E-mail: [microscopy@olympus-europa.com](mailto:microscopy@olympus-europa.com)

**EXFO**  
EXPERTISE REACHING OUT